



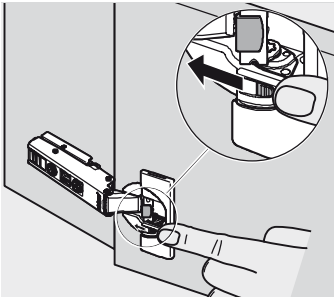
# CLIP top – system zawiasów

CLIP top BLUMOTION – zawiasy ◀

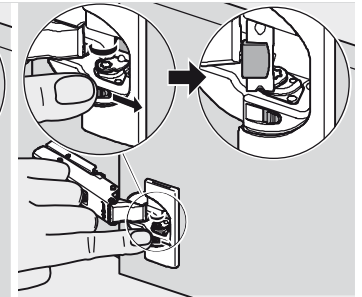
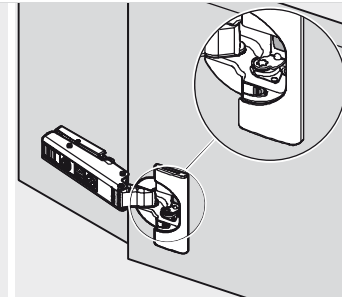
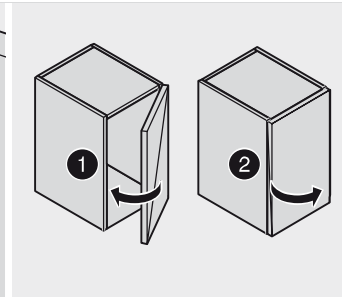
Montaż, demontaż i regulacja ◀◀

CLIP top

## BLUMOTION

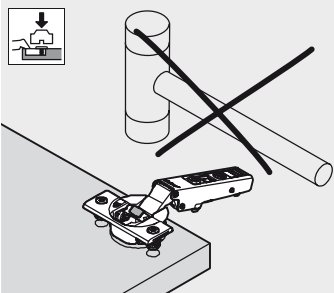


Dezaktywacja



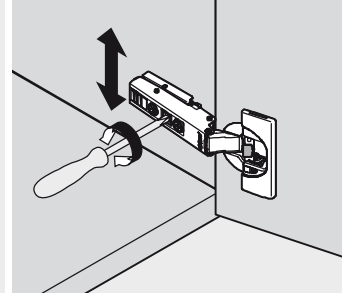
Aktywacja

## Puszka na wcisk

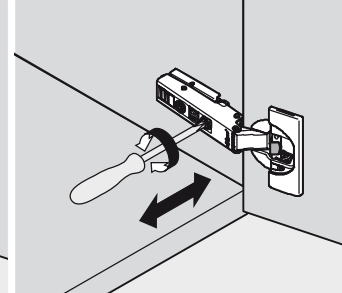


Puszki zawiasu nie wbijają w otwór młotkiem

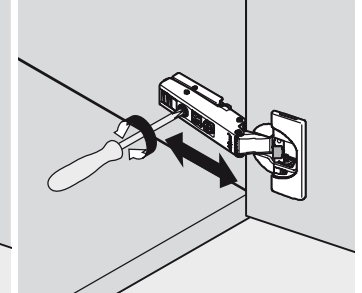
## Regulacja



Regulacja wysokości

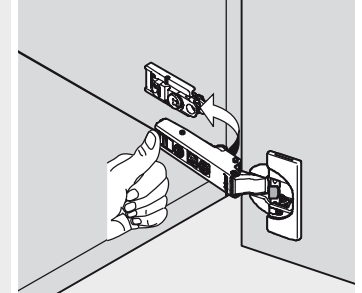
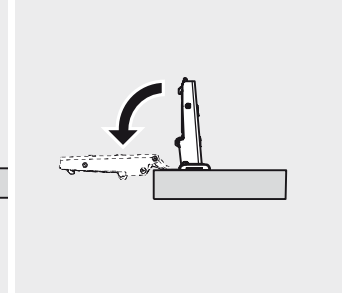
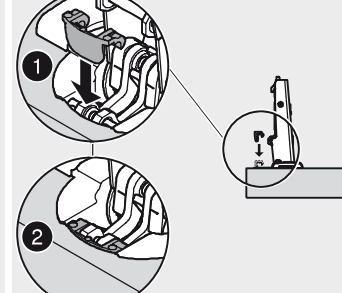
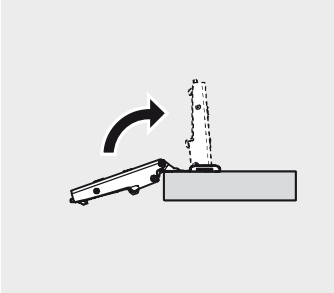


Regulacja boczna



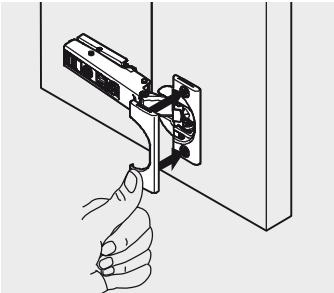
Regulacja głębokości

## Ogranicznik kąta otwarcia 86° – 70T3553

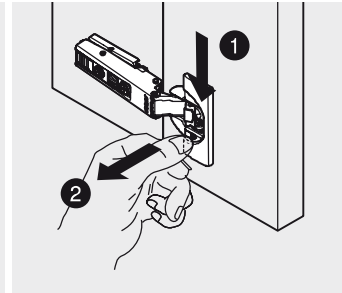


Montaż

## Zaślepka puszk



Montaż



Demontaż